

Battery Free

FUZZYSCAN A670BT 2D Cordless Imager



Deluxe cordless imagers for retail and commercial applications

Equipped with Cino's exclusive FuzzyScan imaging technology, the A670BT is tailored to meet the needs of retail and commercial businesses. It features enhanced reading capabilities with a warm-white illumination for improved color rendering and superior reading of problematic barcodes. Additionally, the device offers versatility, reliability, and sustainability through multiple connectivity options and Cino's UltraCap™ battery-free solution. Upgrade your scanning experience with the A670BT's perfect combination of performance and cost-effectiveness.

- Instant cordless migration via Cino Smart Cradle
- Up to 100m of communication coverage while working with Cino Smart Cradle
- One-step & hassle-free pairing
- UltraCap™ Battery-Free solution supported
- Works with Bluetooth-enabled Windows, MAC, and Linux hosts
- Compatible with most popular Android and iOS mobile devices
- Reads most challenging and problematic barcodes
- Built-in bright warm white illumination for snappy reading
- Batch Scanning for simple stocktaking
- Optional vibration function for tactile confirmations
- Withstands 1.8m drops to concrete
- Inherits the powerful FuzzyScan DNA

Wireless Connectivity and Beyond

For Cino cordless imagers, superior performance is just the start. Comprehensive connectivity and one-step pairing will change the way you work by providing more agility, flexibility, and productivity.

Instant Cordless Migration

No Bluetooth? Not a problem! Pair your A670BT imager with Cino's Smart Cradle or Smart Dongle to instantly overcome the lack of Bluetooth connectivity. Without any additional costs, this instant "Plug-and-Play" cordless migration provides you with a working range of up to 100 meters.

Broad Connectivity

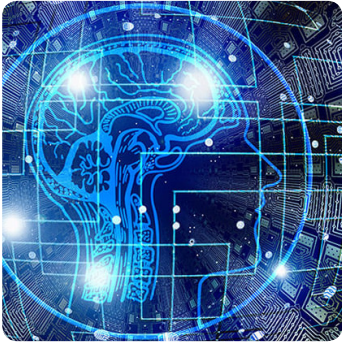
Through the HID or SPP profile, Cino cordless imagers can connect to the most popular Bluetooth-enabled Windows, MAC, and Linux hosts as well as Android and iOS mobile devices.

One-Step & Hassle-Free Pairing

Pairing Cino cordless imagers is a breeze - just "Scan to pair". Scan the "Quick Pair Barcode" on the smart cradle or smart dongle to instantly pair with your A670BT. To pair the A670BT with your remote host, simply scan the "Quick Pair Barcode" generated by Cino ConnectWizard™ and simplify the Bluetooth pairing process.

Multi-functional USB Port

With a built-in USB port, your imager can function as a corded imager if needed. Alternatively, it can be connected to a power source while working to further reduce downtimes and productivity losses.



Exclusive FuzzyScan Imaging Technology

Scan All Your Needs

Powered by exclusive FuzzyScan Imaging technology, the A670BT imager is capable of reading a vast array of challenging and problematic barcodes. The A670BT imager is capable of scanning wrinkled, dirty, or soiled barcodes that are displayed on paper, plastic, metal, digital screens, and curved surfaces.

Cutting Edge Imaging Technology

Powered by state-of-the-art AI-based machine vision, the exclusive FuzzyScan imaging technology is a performance-driven innovation. Incorporated with an advanced optical design and a powerful hardware platform, all Cino Imagers deliver unrivaled scanning speed and accuracy across all types of real-world barcodes.

No Compromise on Performance

The A670BT is designed with superior performance in mind. It not only provides point-and-shoot scanning simplicity, but also delivers outstanding snappiness. This imager does not compromise performance for price and is suitable for most commercial applications.

Warm-White Illumination

The warm-white LED light source is key to versatile scanning. Its eye-friendly warmth and natural lighting enhance color rendering and improve barcode reading in various conditions and environments. Upgrade your scanning experience with the added versatility and flexibility this new light source brings to your scanning tasks.

Practical Functionalities

The advantages of Cino cordless imagers go beyond the maximum mobility delivered via Bluetooth technology. Powered by more practical functions, the FuzzyScan A670BT imager enables you to complete various business tasks and maximize productivity.

“On the Spot” Data Transmissions

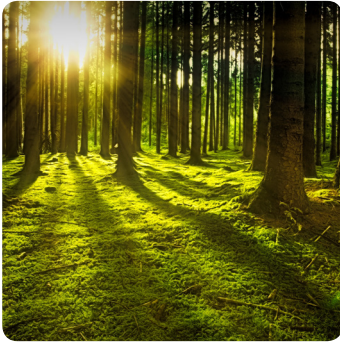
“Online Scanning” usually sends data to hosts immediately after each scan. However, if the “Out-of-range-scanning” function is enabled, the imager can continue to scan and retain up to **5,000 EAN** barcodes when it loses the Bluetooth connection. Once back into radio range, it will automatically reconnect and transmit all stored data to the host.

Inventory Counts Made Simple

“Batch Scanning” is ideal and useful for simple stocktaking. When you use this function, all scanned data will be stored into the imager’s flash memory. Once data transmission is activated, all stored data will be sent to the host as a batch. The A670BT imager can store a maximum of **100,000 EAN** barcodes per batch. Moreover, you can add a quantity value following each scanned data.

Verifying Data Uniformity Made Easy

“Validation Scanning” enables the A670BT imager to compare scanned data against the stored master data to verify data uniformity. This function is useful if data verification is needed during “shipping and receiving” or “order picking”.



Battery-Free Solution

UltraCap™ Battery-Free Solution

The Cino Battery-Free solution is powered by the UltraCap™ Capacitor. This alternative power source is purpose-built with cost-saving and environmental sustainability in mind. The UltraCap™ Capacitor is ideal for applications requiring a very quick charge to fulfill short to medium term operations such as retail, hospitality, healthcare, and so on.

Swappable & Interchangeable

The UltraCap™ features a swappable design. It is not only interchangeable with a standard Li-ion battery, but also compatible with all FuzzyScan cordless hand-held imagers.

Lower Total Cost of Ownership

With just one UltraCap™'s lifespan, you would otherwise use more than 25 standard Li-ion batteries. Therefore, this battery-free solution not only significantly lowers your battery replacement costs but also minimizes the potential loss of productivity caused by dead batteries.

Extended Working Time

With a capacity of 750 Farads, the UltraCap™ boasts the largest capacity among its type, and provides the longest working time by far compared to all its competitors. Each full charge is able to support more than **4,200 scans**. Even with intensive use, this is enough to last for at least one hour.

Quick Get-Up-And-Go

Out of power? No worries. Every 1-minute quick charge is able to support 130 scans. Compared to the standard Li-ion battery, this feature maximizes uptime and allows you to complete short-term scanning operations in a timely fashion.

Eco-Friendly for a Healthier Planet

The long lifespan of UltraCap™ helps reduce lots of e-waste while also exemplifying ESG consciousness and environmental sustainability in the business world.

Enhanced User Experiences

Designed with sharp aiming and multifaceted notification feedback via visual, audio, as well as tactile indications, the A670BT delivers superior usability and a great user experience.

Clear Audio and Visual Feedback

The A670BT imager uses audio and visual indicators to indicate its various statuses. The Imager has a loud beeper with an adjustable volume and tone. The LED lights emit conspicuous and programmable multi-color signals to help users clearly identify the current status at a quick glance.

Tactile Feedback Option

Beeping sounds are considered disruptive in certain circumstances. Vibration is available as an option on this imager to provide tactile feedback to users. This is suitable for both quiet and noisy environments.



FUZZYSCAN DNA

Stylish, Ergonomic and Robust

Combining style, ergonomics and robustness, this model provides an outstanding user experience on all levels. Elegant in appearance, it will easily blend into any commercial decor. The Imager's sleek handle is ergonomically designed to afford a natural, comfortable grip. Furthermore, its robust enclosure can withstand 1.8-meter falls onto concrete, granting a high degree of protection against unintentional drops.

Value beyond Measure

FuzzyScan DNA is a collection of unique features that come with all Cino Imagers at no additional costs. Aside from the exclusive FuzzyScan Imaging technology, Cino Imagers also provide the following features to deliver exceptional value beyond barcode scanning:

- **DataWizard Premium**, a unique feature to perform advanced data formatting and complex data processing to fit specific needs without modifying host programs such as drivers license parsing.
- **iCode**, a macro command barcode that allows one-step configuration with a single scan.
- **Multilingual Edge**, a useful feature that enables data output in your desired language. Aside from Western European and Latin languages, it also supports many Asian languages such as Simplified Chinese, Traditional Chinese, Korean, Japanese, Thai, Hindi, and so on.
- **Smart Scene**, a choice of several preset configurations for various application scenarios to achieve optimal scanning performance.
- **Security Plus**, a user-defined security mechanism that prevents the access of unauthorized barcode Imagers.
- **FuzzyScan Enabling Solution**, a suite of software utilities, including PowerTool, ConnectWizard, and SDK, for the easy configuration, management, and deployment of Imagers.

SPECIFICATIONS

Performance Characteristics

Image Sensor	1120 x 768 Pixels
Print Contrast	18% minimum reflectance difference
Light Source	Warm white LED
Imager Field of View	36.5 ° H x 24.9 ° V
Minimum Resolution	3.0 mil Code 39 5.0 mil DM
Reading Range *1	13 mil (0.33mm) UPC/EAN up to 17.1 "
Roll, Pitch, Skew	Roll: 360 ° ; Pitch: ± 75 ° ; Skew: ± 65 °
Motion Tolerance	Up to 370 cm/s (145 in/s)
Configuration Setup	FuzzyScan Barcode commands FuzzyScan iCode FuzzyScan PowerTool
Data Processing	DataWizard Premium

Electrical Characteristics

Operating Voltage	5 ± 10% VDC
Operating Current	Scanner with Smart Cradle Charging: Maximum 870 mA Standby: Maximum 190 mA

Power

Li-Ion Battery	2,550 mAh capacity 3-4 hour charge time over PSU 9-10 hour charge time over USB Scan-ready at 30% power: 3 hr charge over USB
UltraCap™ Capacitor	750 Farads Less than 50 minute charge time over PSU Less than 60 minute charge time over USB Over 80 minutes of use per full charge Over 4,200 scans per full charge Over 130 scans after one minute charge

Communication Characteristics

RF Standard	Bluetooth Version 4.x
RF Frequency Band	2.402~2.4830 GHz unlicensed ISM band
Radio Link Modes	PAIR, PICO, SPP, HID
Communication Range	Up to 100 meters in open space when working with Smart Cradle, line of sight
Supported Profiles	HID (Keyboard), SPP (Serial Port)

Physical Characteristics

Dimensions	97.0 mm (L) x 65.0 mm (W) x 156.0 mm (D) 3.81 in. (L) x 2.55 in. (W) x 6.14 in. (D)
Weight	188g (with Li-Ion Battery) 166g (with UltraCap™)
Color	Classic Black, Ivory White

Supported Symbolologies

1D Linear Codes	Code 39, Code 39 Full ASCII, Code 32, Code 128, GS1-128, Codabar, Code 11, Code 93, GS1 DataBar, Standard & Industrial 2 of 5, Interleaved & Matrix 2 of 5, IATA, UPC/EAN/JAN, UPC/EAN/JAN with Addendum, Telepen, MSI/Plessey & UK/Plessey
2D Codes*2	PDF417, Micro PDF417, Composite Codes, DataMatrix, MaxiCode, QR Code, MicroQR, Aztec, Codablock F, Code 16K, Code 49, Chinese Sensible (Han Xin) Code
Postal Barcodes	Australian Post, US Planet, US POSTNET, Japan Post, Posi LAPA 4 State Code, German Post, British Post, Intelligent Mail, Korean Post, Dutch KIX Post, China Post

User Environment

Drop Specifications	Withstands multiple drops from 1.8m (6.0ft) to concrete
Environmental Sealing	IP52
Operating Temperature	-10 ° C to 50 ° C (14 ° F to 122 ° F)
Storage Temperature	-40 ° C to 70 ° C (-40 ° F to 158 ° F)
Humidity	0% to 95% relative humidity, non-condensing
Ambient Light Immunity	0 ~ 106,000 lux
ESD Protection	Functional after 15KV discharge

Safety & Regulatory

EMC & Radio	CE, UKCA, FCC, BSMI, RCM, KC, NCC, VCCI, MIC, SRRRC
Safety	LED Eye Safety IEC62471, Exempt Group
Environmental	Compliant with RoHS III and REACH

Accessories

Smart Cradle	HB2112 Smart Cradle
RF Standard	Bluetooth Version 4.x
Host Interfaces	USB HID (USB Keyboard) USB VCOM (USB COM port emulation) USB OEM POS Standard RS232
Cables	RS232 Serial Cable USB-A Cable USB-C Cable USB Power Cable
Others	UC2210 UltraCap™ (750 Farads) BT2100 Battery Pack (2,550mAh) US100 SmartStand Power Supply Unit (5VDC, 2A outlet)

1. The Reading Ranges are measured under manufacturing preset test environmental condition.
2. Codablock F, Code 16K, Code 49, and Chinese Sensible (Han Xin) Code are available upon request.

